

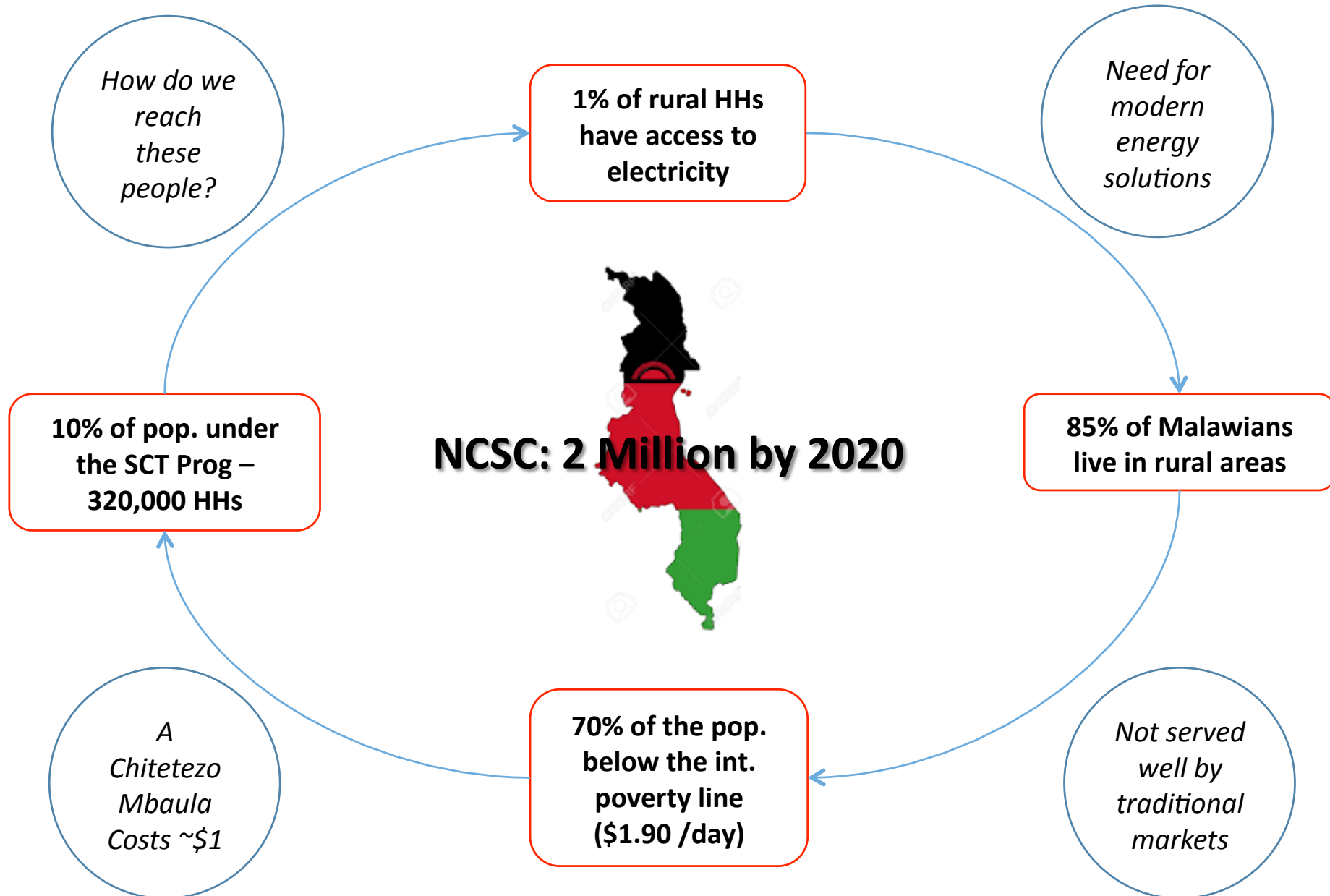
Linking Energy with Social Welfare Programmes

Integration of the Chitetezo Mbaula into the
Social Cash Transfer Programme

Talk Overview

1. The Malawi Context
2. The Social Cash Transfer Programme
3. The Project Approach and Balaka Pilot
4. Scaling Up

The Malawi Context



Social Cash Transfer Programme

- Falls under the National Social Support Policy and Programme.
- Provides cash transfers to Ultra Poor and Labour Constrained Households
- Implemented by Ministry of Gender, with funding from:
 - GoM
 - Germany-KfW
 - Irish-Aid
 - EU
 - WB
 - UNICEF (TA & CD).
- Currently >150,000 households profiled in 18 districts
- Each district has a list of all beneficiaries, divided into clusters
- The SCT structure therefore provides an excellent targeting mechanism for complimentary interventions

Integrating stoves into SCT Prog.



General Concept

- Most SCT beneficiaries use 3-stone fires
- Beneficiaries have increased vulnerability in terms of
 - Health impacts / In-door air pollution
 - Burden of sourcing wood
 - Household incomes
- Most can't afford cleaner stoves despite low cost
- Therefore, subsidising through a voucher system ensures access to the 'poorest of the poor'
- Approach designed to establish local value chains, driving commercial sales & increasing sustainability – 1:1 ratio
- SCT stoves create a predictable basic income for sales agents, allowing them to sell to those with more disposable income → long term markets

Integrating stoves into SCT Prog.

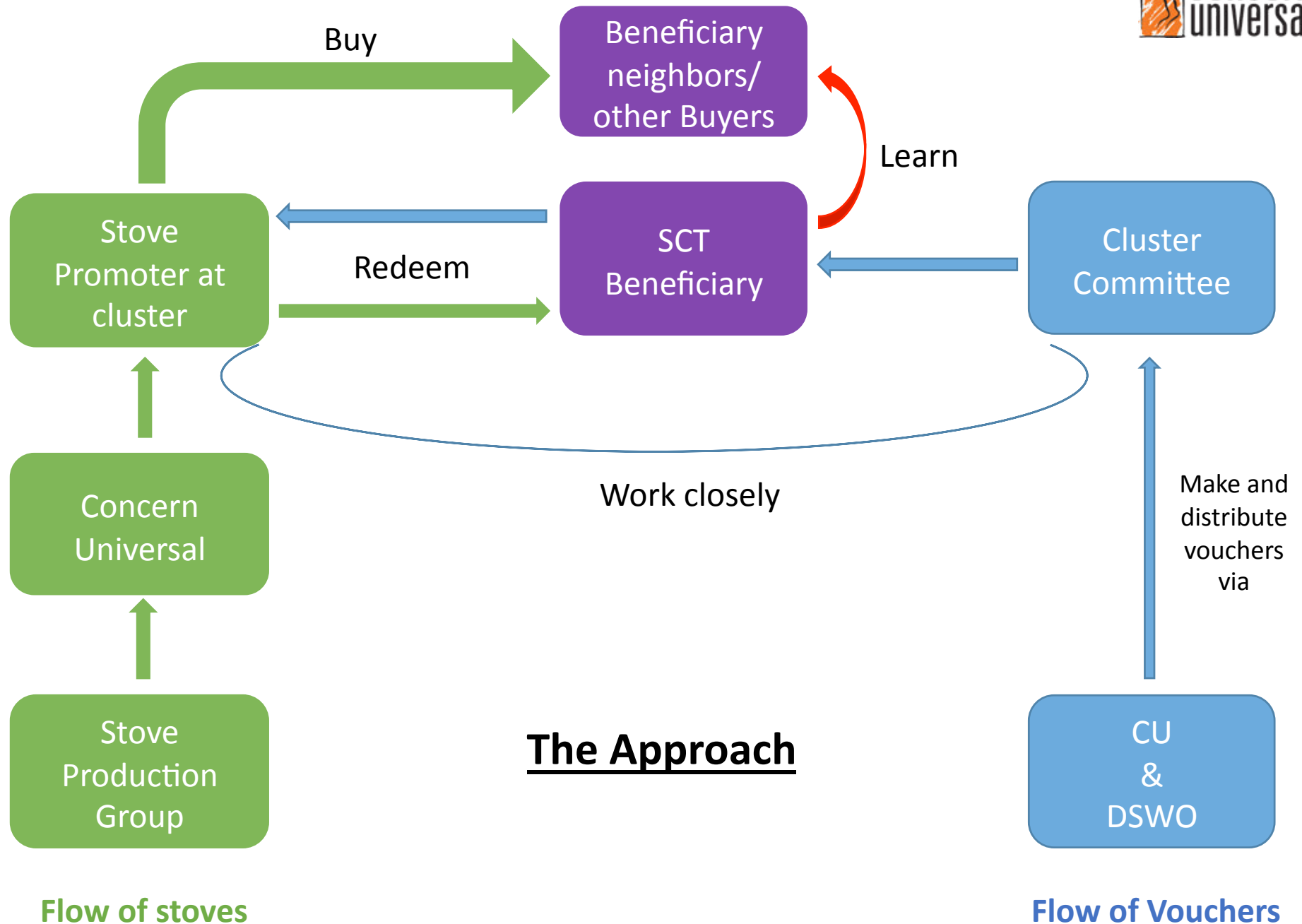


Overall Goal

- To contribute to the national target of having 2 million cleaner stoves adopted in Malawi

Specific Objectives



- To ensure low income households in Malawi can access cleaner cookstoves (Short Term)
- To create a sustainable rural stove market across Malawi (Medium Term)



Integrating stoves into SCT Prog.



Sample Stove Voucher

 concern universal		
	Chitetezo Stove Purchase Voucher K oponi yogulira mbaula ya Chitetezo	
Use this coupon to redeem one stove worthy K600 from any promoter within your cluster. Do not pay anything. Carry your Identity cards when going to redeem your stove.		
Please use this coupon within two weeks after from the day you receive it.	Serial No. SiSCT-1.	NAME: [.....] ID: [.....]

Balaka Pilot



Balaka Pilot



Balaka Trial Results

- 71 promoters in 72 clusters
- 8273 vouchers distributed
- 16,187 stoves distributed to promoters
- 8029 Free stoves distributed to SCT beneficiaries
- Full Price Stoves sold: >6500
 - >77% of anticipated sales
 - 45% of total stoves distributed
- MWK 9,546,400 income generated for SPGs and promoters (\$13,263)
- Results suggest that SCT model is supportive of developing a parallel commercial market



Scaling up

Project	Funder	Districts	Year	# SCT Beneficiaries
ENGAGED	Irish Aid	Dedza (2 TAs)	2016	3,110
Mchinji SCT	Irish Aid	Mchinji	2016	10,500
Access to Modern Cooking Energy for Poor and Vulnerable Groups in Malawi	EnDev and Irish Aid Results Based Finance Project	Machinga	2016	14,000
		Zomba	2016	15,500
		Neno	2016	2,015
		Phalombe	2017	7,600
		Mulanje	2017	6,200
		Thyolo	2017	10,000
		Chikwawa	2018	4,500
		Mangochi	2018	18,000
Total				91,425

Thank You for Listening



Irish Aid

Department of Foreign Affairs
An Roinn Gnóthaí Eachtracha



energising
development